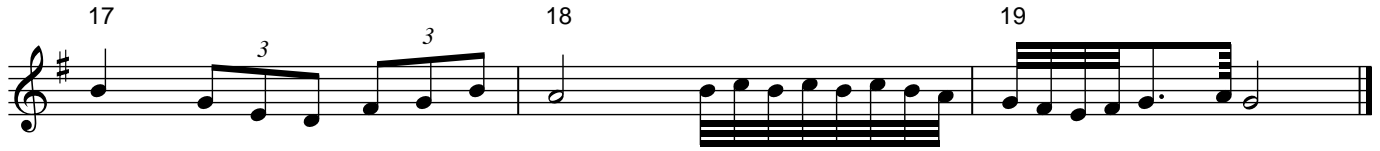


**Tunes from O'Neill's "Music of Ireland" ("the 1850")  
Airs #1-625**

***DARK WOMAN OF THE GLEN***

The musical score for "Dark Woman of the Glen" is written in 3/4 time and the key of D major (one sharp). It consists of 16 measures across nine staves. The notation includes various rhythmic patterns, including eighth and sixteenth notes, and rests. Measure 14 contains a prominent sixteenth-note run. Fingerings are indicated by numbers 1-5 above notes. Trills are marked with a '3' below the notes. The piece concludes with a double bar line at the end of measure 16.

***Tunes from O'Neill's "Music of Ireland" ("the 1850")  
Airs #1-625***



***NOTE:***

***(Online) Links below can be click-opened once page is downloaded.***

***(Offline) Copy and paste link into browser address box.***

***SOUND FILE: [www.capeirish.com/ittl/tunefolders/49/491/491-mp3/138dwg.mp3](http://www.capeirish.com/ittl/tunefolders/49/491/491-mp3/138dwg.mp3)***

***ABC FILE: [www.capeirish.com/ittl/tunefolders/49/491/491-ABC.rtf](http://www.capeirish.com/ittl/tunefolders/49/491/491-ABC.rtf)***

***TUNEFOLDER 491 Index: [www.capeirish.com/ittl/tunefolders/49/491/491-table.html](http://www.capeirish.com/ittl/tunefolders/49/491/491-table.html)***